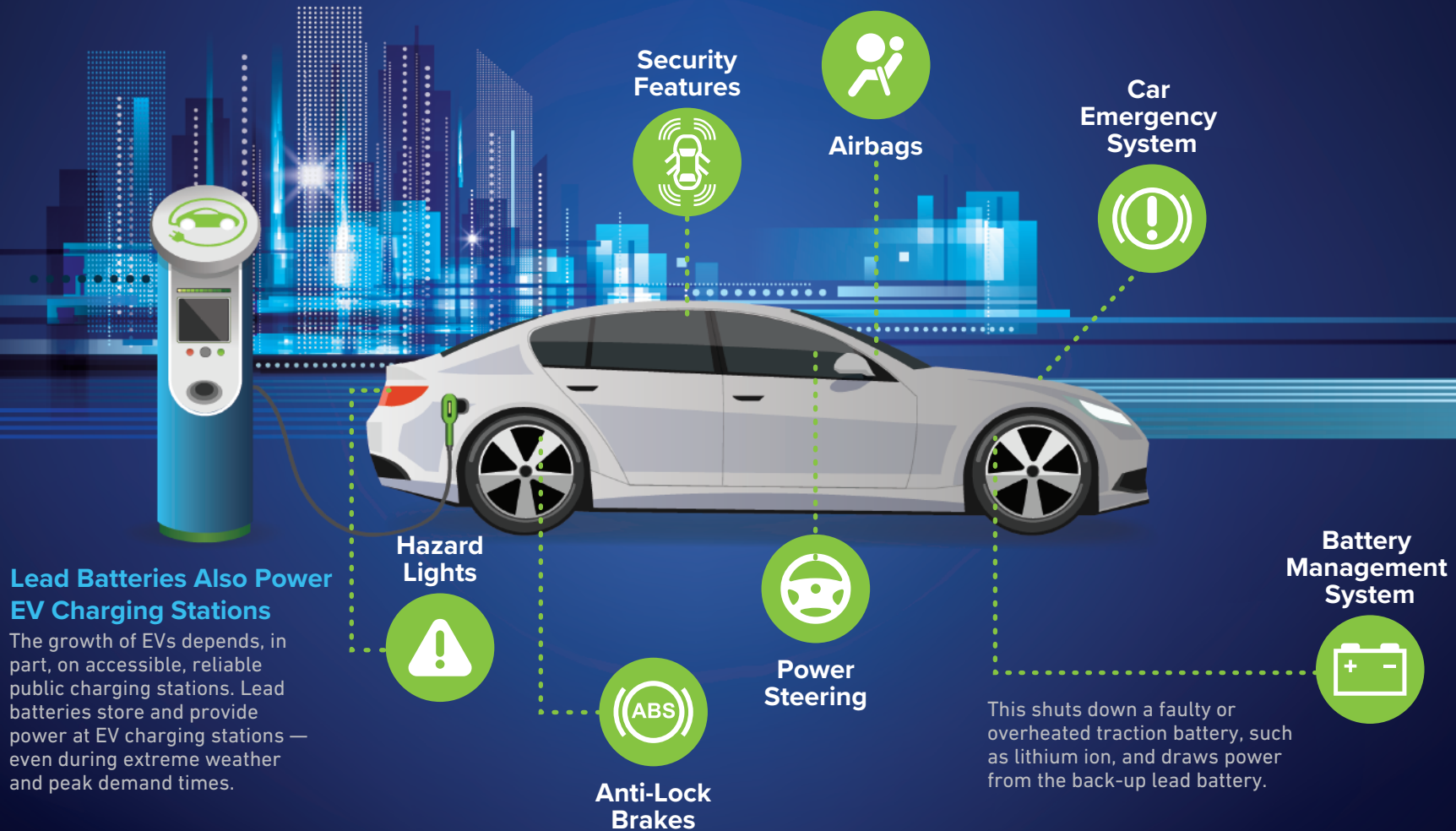


# ENABLING THE ELECTRIC VEHICLE REVOLUTION

## Lead Batteries Support Critical Onboard Functions

Electric vehicles (EVs) depend on lead batteries for critical safety and security functions. Should an EV's propulsion battery fail (or overheat), the auxiliary battery will provide back-up power. It ensures the driver can still brake, steer and access these other essential electrical functions in an emergency:



Learn more at [BatteryCouncil.org](https://BatteryCouncil.org)

Visit [BatteryCouncil.org/sources](https://BatteryCouncil.org/sources) to view source information.  
01.05.24 ©2024 Battery Council International